

**HIGH
LINE**

**OPEN STUDIOS
CHELSEA 2017**

High Line Open Studios October 14-15, 2017

M

**Step Inside the
Artist's Studios located in the iconic
West Chelsea Art Gallery district.**

A

**Artists' Open Studios
Saturday & Sunday
October 14-15, 2017, 12 - 6 p.m.**

P

**The self-guided tour begins at the
West Chelsea Arts Building
508 - 526 West 26th St. NY, NY, Lobby - Map and info.**

**Open Studios Location Tour Maps are available at
Artist & Craftsman Supply, www.artistcraftsman.com**

**Park Slope, 307 2nd Street, Brooklyn, 718-499-8080
Bushwick, 1449 Broadway, Brooklyn, 718-455-5829
Williamsburg, 761 Metropolitan Ave., Brooklyn, 718-782-7765
Long Island City, 34-09 Queens Blvd, Long Island City, 718-433-4949
Long Island, 941 Hempstead Turnpike, Franklin Square, 516-326-7990
Harlem, 2108 7th Ave Adam Clayton Powell Blvd., 212-222-4700**

www.highlineopenstudios.org

© copyright 2017 High Line Open Studios. All rights reserved.

M
A
P

HIGH
LINE

OPEN STUDIOS
CHELSEA 2017

High Line Open Studios October 14-15, 2017

Artists' Open Studios:

Saturday, Sunday, October 14-15, 2017 12 to 6 p.m.

*The self-guided tour is free and open to the public
The tour begins at 508 - 526 West 26th Street, NYC, Lobbies.*

www.highlineopenstudios.org

© copyright 2017 High Line Open Studios. All rights reserved.

6 NEW YORK LOCATIONS:

HARLEM, NEW YORK

2108 7th Ave Adam Clayton Powell Blvd
(212) 222-4700

LONG ISLAND CITY, QUEENS

34-09 Queens Blvd • (718) 433-4949

WILLIAMSBURG, BROOKLYN

761 Metropolitan Ave • (718) 782-7765

PARK SLOPE, BROOKLYN

307 2nd St • (718) 499-8080

BUSHWICK, BROOKLYN

1449 Broadway • (718) 455-5829

FRANKLIN SQUARE, LI

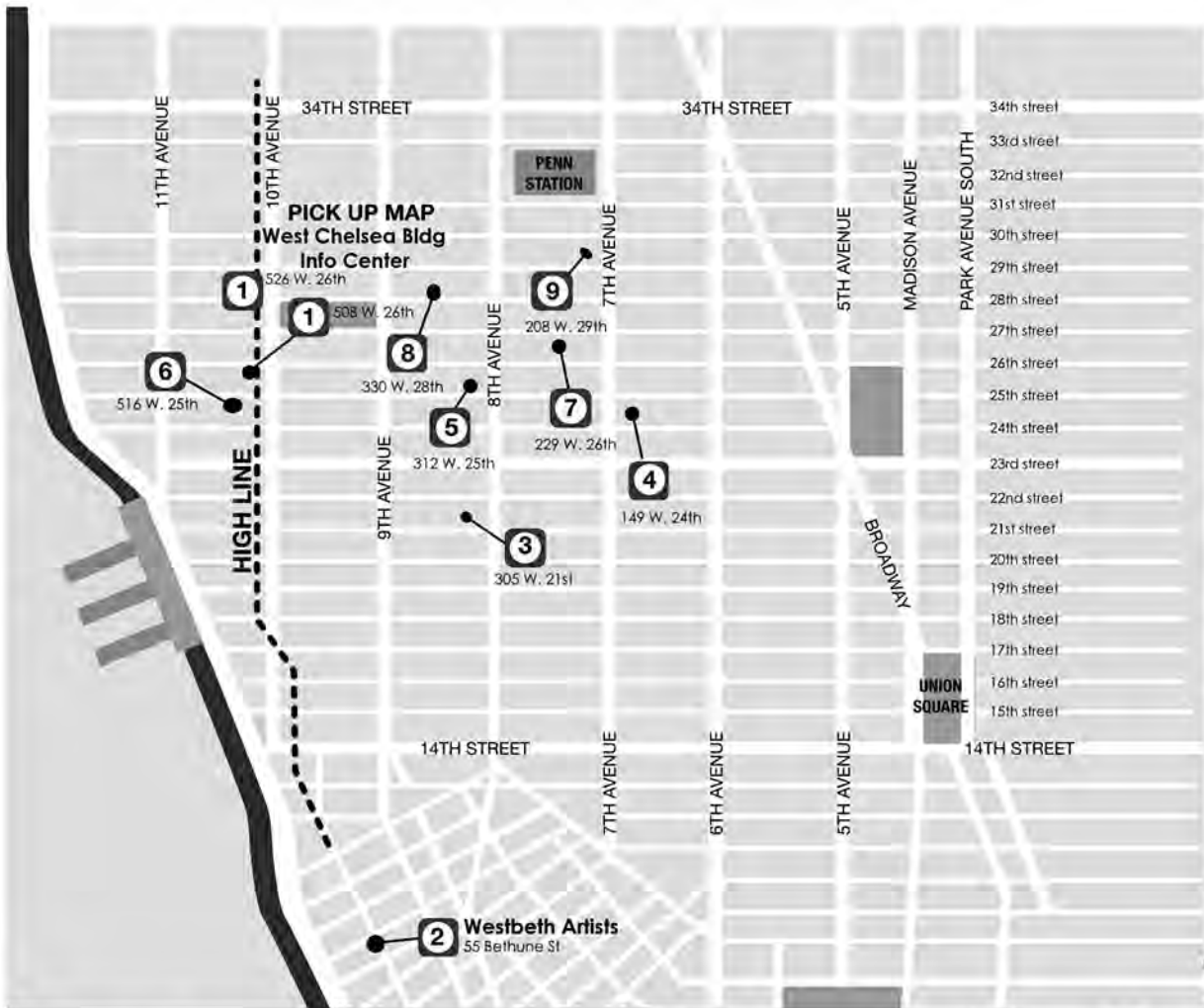
941 Hempstead Tpke • (516) 326-7990



- COMPREHENSIVE SELECTION OF SUPPLIES FOR PROFESSIONALS, STUDENTS & KIDS
- CRAFTING SUPPLIES, TOYS & FUN STUFF
- STUDENT / TEACHER DISCOUNTS

WWW.ARTISTCRAFTSMAN.COM

[f /ArtistCraftsmanSupply.Official](https://www.facebook.com/ArtistCraftsmanSupply.Official) [i /ArtistCraftsmanSupply](https://www.instagram.com/ArtistCraftsmanSupply)



HIGH LINE OPEN STUDIOS CHELSEA 2017

High Line Open Studios October 14-15, 2017

Artists' Open Studios: Saturday, Sunday, October 14-15, 2017, 12:00 - 6:00 p.m.

OUR SPONSORS

1. ART511 Magazine
www.ART511mag.com

1. Art Bridge
www.art-bridge.org

1. Art Introductions
www.artintroductions.com

Artist & Craftsman Supply
www.artistcraftsman.com

Artist & Craftsman - Park Slope
307 2nd Street, Brooklyn, NY, 11215
844-499-8080, 718-499-8080

Artist & Craftsman - Bushwick
1449 Broadway, Brooklyn, NY, 11221
718-455-5829

Artist & Craftsman - Williamsburg
761 Metropolitan Ave., Brooklyn, NY,
11211, 888-772-4542, 718-782-7765

Artist & Craftsman - Long Island City
34-09 Queens Blvd, Long Island City
NY, 11101 844-433-4949, 718-433-4949

Artist & Craftsman - Long Island
941 Hempstead Turnpike, Franklin
Square, New York, 11010
844-511-7990, 516-326-7990

Artist & Craftsman - Harlem
2108 7th Ave Adam Clayton Powell
Blvd., New York, NY, 10027
855-325-4700, 212-222-4700

1. Public Art Squad
www.publicartsquad.org

1. Visual Aids
www.visualaids.org

2. Westbeth Artists Housing
55 Bethune Street
www.westbeth.org

www.highlineopenstudios.org

High Line Open Studios - Saturday, Sunday, October 14-15, 2017, 12 - 6 P.M.
Headquarters are located at the West Chelsea Arts Building, 508-526 West 26th Street.

OPEN STUDIO LOCATIONS

1. 508 & 526 West 26th St

LaThoriel Badenhausen
Studio 523

Ruth Brownstein
Studio 7F

Bob Clyatt
Studio 302

Tom Cocotos
Studio 511

Barb Cone
Studio 7F

Julie Harman Dovan
Studio 9D

Rodney Durso
Studio 503

William Engel
Studio 612

Camille Eskell
Studio 302

Anne Gaffey
Studio 7F

Wilson Hand Kidde
Studio 601

Iris Levinson
Studio 706

Ian Mack
Studio 723

Xanda McCagg
Studio 509

Catherine Mosely
Studio 606

Scotto Mycklebust
Studio 511

Jon Nathanson
Studio 6E

International Print Center NY
Studio 5A

Fernando Rangel
Studio 706

Thomas Real
Studio 7F

Karen Rosenkrantz
Studio 9D

**Dana Saulnier / First Street
Gallery**
Studio 209

**Suzanne Schultz / Canvas Fine
Arts**
Studio 7F

Sophie Staerk
Studio 9D

Mark Tortorella
Studio 7F

**2. WESTBETH
55 Bethune Street**

Lucienne Weinberger
Studio D-1015

3. 305 West 21st Street

Andra Gabrielle
Street Level

4. 149 West 24th Street

Darcy Gerbarg
Studio 5C

5. 312 West 25th Street

Gabriel J. Shuldiner
Suite 20E

6. 516 West 25th Street

Jennifer Joanou
Studio 306B

7. 229 West 26th Street

Frank Rivera
Studio 2-C

8. 330 West 28th Street

Barb Minsky
Studio APT 21A

9. 208 West 29th Street

James Acevedo
Studio 403

Katherine D. Crone
Studio 503

David FeBland
Studio 309

Anne Finkelstein
Studio 403

Jenna Lash
Studio 602

Barbara Rachko
Studio 605

Frances Vye Wilson
Studio 613

High Line Open Studios October 14-15, 2017

Artists' Open Studios: Saturday, Sunday, October 14-15, 2017, 12:00 to 6:00 p.m.



James Acevedo
Category: Painting
Studio: 403
Building: 208 W 29th St



Julie Harman Dovan
Category: Painting
Studio: 9D
Building: 526 W 26th St



Anne Gaffey
Category: Painting
Studio: 7F
Building: 526 W 26th St



LaThoriel Badenhausen
Category: Mix Media
Studio: 523
Building: 526 W 26th St



Rodney Durso
Category: Painting
Studio: 503
Building: 526 W 26th St



Darcy Gerbarg
Category: Painting
Studio: 5C
Building: 149 W 24th St



Ruth Brownstein
Category: Painting
Studio: 7F
Building: 526 W 26th St



Willaim Engel
Category: Painting
Studio: 612
Building: 526 W 26th St



Jennifer Joanou
Category: Painting
Studio: 306B
Building: 516 West 25th St



Bob Clyatt
Category: Sculpture
Studio: 302
Building: 526 W 26th St



Camille Eskell
Category: Mix Media
Studio: 302
Building: 526 W 26th St



Wilson Hand Kidde
Category: Painting
Studio: 601
Building: 526 W 26th St



Tom Cocotos
Category: Mix Media
Studio: 511
Building: 526 W 26th St



David FeBland
Category: Painting
Studio: 309
Building: 208 W 29th St



Jenna Lash
Category: Painting
Studio: 602
Building: 208 W 29th St



Barb Cone
Category: Painting
Studio: 7F
Building: 526 W 26th St



Anne Finkelstein
Category: Painting
Studio: 403
Building: 208 W 29th St



Iris Levinson
Category: Painting
Studio: 706
Building: 526 W 26th St



Katherine D. Crone
Category: Painting
Studio: 503
Building: 208 W 29th St



Andra Gabrielle
Category: Mix Media
Studio: Street Level
Building: 305 W 21St



Ian Mack
Category: Painting
Studio: 723
Building: 526 W 26th St

Visual Guide to Participating Artists

Preview artist work to plan your self-guided tour



Xanda McCagg
Category: Painting
Studio: 509
Building: 526 W 26th St



Fernando Rangel
Category: Painting
Suite: 706
Building: 526 W 26th St



Sophie Staerk
Category: Painting
Suite: 9D
Building: 526 W 26th St



Barbara Minsky
Category: Painting
Studio: APT 21A
Building: 330 West 28th St



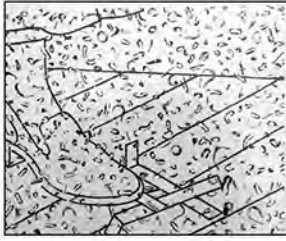
Thomas Real
Category: Photography
Suite: 7F
Building: 526 W 26th St



Mark Tortorella
Category: Mix Media
Suite: 7F
Building: 526 W 26th St



Catherine Mosley
Category: Printmaking
Studio: 606
Building: 526 W 26th St



Frank Rivera
Category: Painting
Studio: 2-C
Building: 229 W 26th St



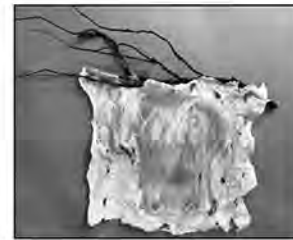
Lucienne Weinberger
Category: Mix Media
Studio: D-1015
Building: Westbeth
55 Bethune St



Scotto Mycklebust
Category: Painting
Studio: 511
Building: 526 W 26th St



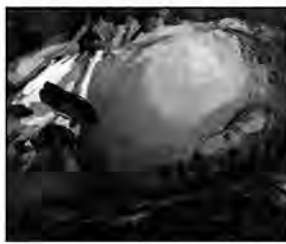
Karen Rosenkrantz
Category: Painting
Studio: 9D
Building: 526 W 26th St



Frances Vye Wilson
Category: Sculpture
Studio: 613
Building: 208 W 29th St



Jon Nathanson
Category: Painting
Studio: 6E
Building: 526 W 26th St



**Dana Saulnier/
First Street
Gallery**
Category: Painting
Studio: 209
Building: 526 W 26th St



**International
Print Center NY**
Category: Printmaking
Studio: 5A
Building: 526 W 26th St



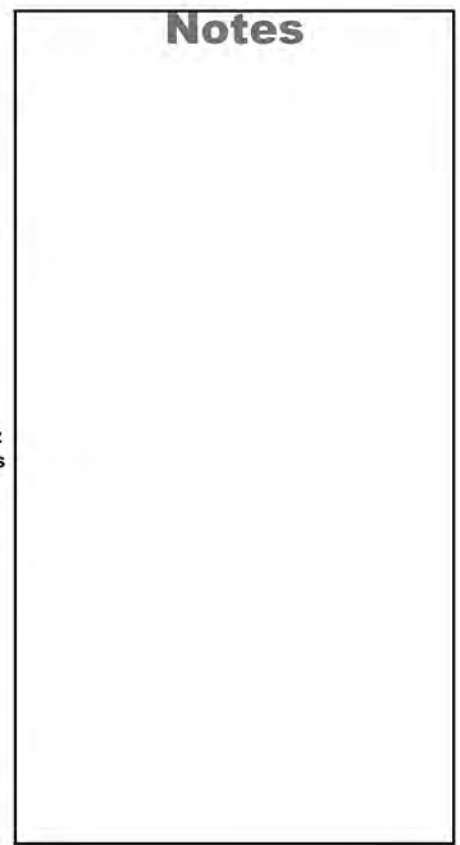
**Suzanne Schultz
Canvas Fine Arts**
Category: Fine Art
Suite: 7F
Building: 526 W 26th St



Barbara Rachko
Category: Painting
Studio: 605
Building: 208 W 29th St



**Gabriel J.
Shuldiner**
Category: Sculpture
Suite: 20E
Building: 312 W 25th St



The artists of the High Line Open Studios
invite the public to step inside their private studios.

**HIGH
LINE**

**OPEN STUDIOS
CHELSEA 2017**

High Line Open Studios October 14-15, 2017

Artists' Open Studios:

Saturday, Sunday,

October 14-15, 2017 12 to 6 p.m.

**The self-guided tour begins at the West Chelsea Arts Building
508 - 526 West 26th St. NY, NY, Lobby - Map and info.**

James Acevedo

LaThoriel Badenhausen

Ruth Brownstein

Bob Clyatt

Tom Cocotos

Barb Cone

Katherine D. Crone

Julie Harman Dovan

Rodney Durso

William Engel

Camille Eskell

Anne Finkelstein

David FeBland

Andra Gabrielle

Anne Gaffey

Darcy Gerbarg

Jennifer Joanou

Wilson Hand Kidde

Jenna Lash

Iris Levinson

Ian Mack

Xanda McCagg

Barbara Minsky

Catherine Mosley

Scotto Mycklebust

Jon Nathanson

International Print Center NY

Barbara Rachko

Fernando Rangel

Thomas Real

Frank Rivera

Karen Rosenkrantz

Dana Saulnier/First Street Gallery

Suzanne Schultz/Canvas Fine Art

Gabriel J. Shuldiner

Sophie Staerk

Mark Tortorella

Lucienne Weinberger

Frances Vye Wilson

Tour Guide Maps are also available at Artist & Craftsman Supply, www.artistcraftsman.com

Park Slope, 307 2nd Street, Brooklyn, 718-499-8080

Bushwick, 1449 Broadway, Brooklyn, 718-455-5829

Williamsburg, 761 Metropolitan Ave., Brooklyn, 718-782-7765

Long Island City, 34-09 Queens Blvd, Long Island City, 718-433-4949

Long Island, 941 Hempstead Turnpike, Franklin Square, 516-326-7990

Harlem, 2108 7th Ave Adam Clayton Powell Blvd., 212-222-4700



www.highlineopenstudios.org

© copyright 2017, High Line Open Studios. All rights reserved.